



June 2026

## Whole School News

Dear Oakthorpe Families and Community,

I hope all of our families enjoyed the half-term break and were able to make the most of the exceptionally warm weather we experienced. Although temperatures now seem to be cooling slightly, we would still recommend that children come to school prepared for sunny days with hats, sun cream and water bottles where appropriate.

June is another jam-packed month with lots of exciting events, activities and learning opportunities taking place across the school. Please take a look at the dates section of this newsletter to ensure you don't miss anything important.

I would also like to thank all parents and carers for the continued efforts you are making to support good school attendance. We have seen positive improvements and greatly appreciate your partnership in ensuring children attend school regularly and on time. Attached to this newsletter is the attendance poster that was recently emailed to all families. This outlines the procedures and expectations that all schools are required to follow as part of the national drive to improve attendance and meet the targets set by the government.

A huge well done to our Year 6 pupils who completed their SATs assessments at the end of last half term. We are incredibly proud of the resilience, determination and hard work they have shown throughout the year and during the assessment period. I would also like to thank the Year 6 staff team and all those who supported during the week for their dedication and support in preparing the children so well.

This half term brings further national assessments. Our Year 4 pupils will be taking part in the Multiplication Tables Check, while Year 1 children will complete the Phonics Screening Check. In Reception, children will be assessed against the Early Years Foundation Stage framework to determine whether they have achieved a Good Level of Development. We know that all of our pupils will do their very best, and we thank families for their continued support with learning both at school and at home.

Thank you, as always, for your ongoing support of our school community.

Warm regards,  
Mr J Wheeler



## June

### Dates for your diary

- 1<sup>st</sup> - 12<sup>th</sup> June - Year 4 Multiplication Timetable Check
- 1<sup>st</sup> June: Y6 Junior Citizens Trip / Perform workshops for EYFS and KS1
- 1<sup>st</sup> and 2<sup>nd</sup> June: EYFS play sessions for September 2026 cohort.
- 3<sup>rd</sup> June: Year 6 transition workshop with MYME
- 5<sup>th</sup> June: Reception trip to Willows Farm
- WB 8<sup>th</sup> June: Year 1 Phonics Screening Check
- 10<sup>th</sup> June: Year 6 transition workshop with MYME
- 16<sup>th</sup> June: OAKTHORPE SUMMER FETE! 5-8pm
- 17<sup>th</sup> June: Year 5 trip to Laurel Park / Y4 trip to Young Mariners
- 18<sup>th</sup> June: Year 6 Prom
- 22<sup>nd</sup> June: INSET DAY
- WB 22<sup>nd</sup> June: Health, Fun and Fitness week
- 24<sup>th</sup> June - Y3 trip to Southend
- 25<sup>th</sup> June: Sports day (email with full details to follow)
- 29<sup>th</sup> June: Year 6 PGL trip / Boys' cricket competition



## Friends of Oakthorpe needs you!

Our Summer Fete is fast approaching! If you are able to help out for some or all of the Summer Fete, please do let us know! We would welcome any support from parents and carers.

How you can help:

- Supporting on a stall
- Helping with the set up and clean up
- Asking the local community/businesses for prizes and donations to the raffle.
- Selling raffle tickets
- Supporting with organising the hampers

There are always lots of jobs we need support with!



## WHAT OAKTHORPE IS EXPECTED TO DO.

At Oakthorpe, we are bound to guidance and expectations by both the Department for Education and the Local Authority which we are required to follow.



### SEVERE ABSENCE

If a child's absence continues to not improve, a School Attendance Panel will be held with the school and the Educational Welfare Service.

Where all other avenues have been tried, penalty notices or prosecution could occur.

## NATIONAL TARGET IS 96%



All schools have been set an attendance target of 96%. Schools are required to send reminders to any families whose child's attendance has fallen below 96%.

All absence, even if authorised by the school due to sickness/illness, counts towards absence. Being late after the register also counts towards attendance.



# Attendance Information



### PERSISTENT ABSENCE

When attendance falls below 90%, this is called **persistent absence.**

We will monitor in school and have supportive conversations to improve attendance.

### CONTINUED PERSISTENT ABSENCE

Where absence does not improve with in school monitoring at support. The Educational Welfare Officer (EWO) will begin to monitor.

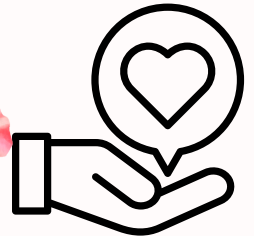
Parents will be invited in for attendance clinics with the Attendance Lead and EWO. An attendance improvement plan may be put in place.



## Attendance



At Oakthorpe, we want all children to maximise their learning time by having 96%+ attendance! Currently our whole school attendance has dipped further to 94.4%.



## Our core values

Respect  
Responsibility  
Excellence  
Confidence  
Creativity

## Values of the month

Empathy

## Punctuality

We continue to see lots of children being brought into school late each morning. This has a massive impact on their learning as they are missing a key part of the morning settling in routine. Please aim to get to school for 8.50am when the gates open!



Lateness adds up!

5 minutes late each day	3 school days lost
10 minutes late each day	6.5 school days lost
15 minutes late each day	10 school days lost
20 minutes late each day	13 school days lost
30 minutes late each day	19 school days lost

# SCIENCE

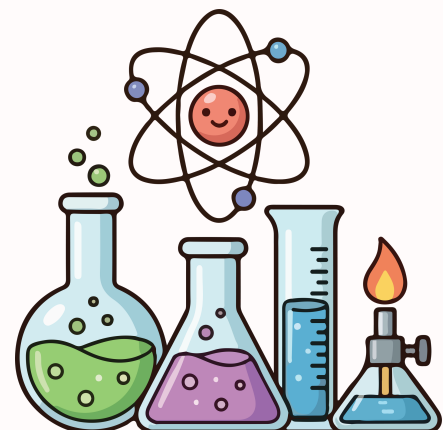
Science week 2026 was a huge hit!



Year 6 had some special visitors from the local nursery!

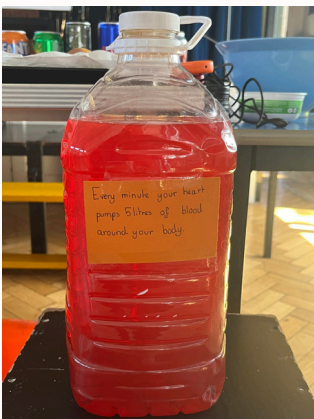
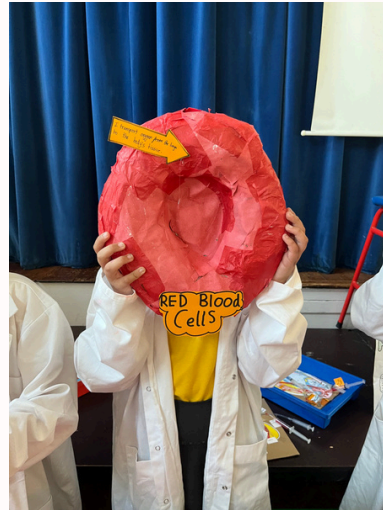
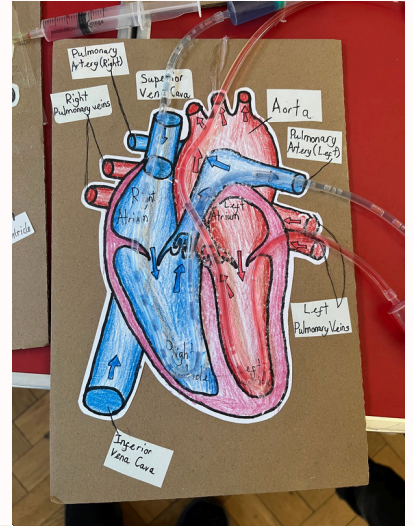


A huge thank you to all of the parents who donated flowers and helped plant at our EYFS flower festival!



The week ended with our Science Fair! Projects were displayed from Reception to Year 6. The children confidently shared their learning with the rest of the school and their families!

# SCIENCE



# uniform

## Earrings

Children must not come to school wearing any form of hooped earring. Children are only permitted to wear studs. This is for health and safety reasons.

We will ask children to take any hoop earrings out.

There has been an increase in children coming to school not wearing the correct school uniform. Our policy has been designed to be comfortable for children and to promote a sense of community and belonging. Please ensure children come to school each day in the correct uniform. We run pre-loved uniform shops often but please do come and speak to a member of the team to order any uniform you need.

## OAKTHORPE SCHOOL UNIFORM

- Gold polo shirt with logo or white blouse or shirt
- Grey skirt or grey/black trousers. Reception children may wear green tracksuit bottoms
- Green jumper or cardigan
- White, grey or black socks or tights
- Plain black shoes. In winter ankle boots may be worn.
- Plain items of clothing may be purchased from a range of retailers.

## OPTIONAL ITEMS

- School tie may be worn with a white shirt or blouse
- Green fleece
- Cotton Dress – white/green gingham
- Grey shorts

Please help us to help you by clearly marking all clothing, bags and personal possessions.



## Please be reminded of the following:

- **Cycling shorts are not permitted (including PE lessons)**
- **Leggings can only be worn for PE lessons**



## Donate a birthday book!

When it is your child's birthday, instead of cakes, why not consider donating a book to our wonderful school library! We will put a lovely sticker in the book to show who the birthday book has been donated by and a certificate will go up in the library! If you are going to bring in cakes for the class, please can these be pre-packaged to support us being allergy friendly!

Please see our [Birthday Book Wishlist](#), which has been carefully created by the children.

 LINK

Raise free donations for Oakthorpe Primary School when shopping online with easyfundraising. It won't cost you a penny extra. All you need to do is:

1. Go to <https://www.easyfundraising.org.uk/causes/oakthorpeprimaryschool/> and join for free.
2. Install the app and Donation Reminder extension.
3. Activate your donation before shopping online and the retailer will automatically donate to us for free!

Thank you for your support.

8,000+ retailers will donate to us whenever you shop with them



TESCO

JOHN  
LEWIS

ebay

JUST EAT



Start at the  
easyfundraising  
website or app



Click out  
to where you'd  
like to shop



Checkout:  
prices are exactly  
the same!

The retailer sends  
a % of your spend  
to easyfundraising



They pass  
it on to us  
:)

Plus, you'll get...



Exclusive retailer offers



Competitions



A warm feeling inside!

Over  
**£60m**  
raised for UK good causes

**£0**  
extra cost to anyone



 Advertise with Us!

Would you like to promote your local business or community group to Oakthorpe families?

Our monthly school newsletter reaches a wide and engaged audience of parents, carers, and staff—making it a great opportunity to share your services or events.

To find out more or to book an advert, please contact the school office at:

 [office@oakthorpe.enfield.sch.uk](mailto:office@oakthorpe.enfield.sch.uk)

 020 8807 4689

All proceeds go towards supporting enrichment activities for our pupils

# Keep Your Child Safe Online



**T**

**E**

**C**

**H**

## TALK

**Talk** to your child about their internet use and safety

**Have meaningful conversations** about how they use the internet

**Praise** your child for safe online behaviours

**Welcome** your child if they want to ask you a question or tell you about a problem, even if they've done something unwise themselves

## EDUCATE

**Learn as much as you can** about games, platforms, parental controls and the benefits and risks of online activity

**Teach** your child about specific issues and concerns

**Teach** your child about safe and unsafe relationships and how to repair friendships following disagreements online

## CO-VIEW

**Co-view** your child's online activity at least 1x/week

**Interact** with your child online

**Model** appropriate online behaviour

**Co-operate** with each other to promote the well-being of all



## HOUSE RULES

**Set clear routines, rules and boundaries** ("house rules")

**Keep** to age ratings and guidance for apps, games and devices

**Restrict** online activity to daytime and communal areas

**Use** filters and parental controls

**Spend regular screen-free time** with your child



**AGE 11+**

for a basic phone or highly restricted smart phone without internet access or social media

**AGE 14+**

for a smart phone with parental controls

\*Agree a contract with your child to encourage responsible phone use

