



May 2026

Whole School News

Dear Oakthorpe Families and Community,

As we welcome the month of May, school life continues to be busy, purposeful and full of exciting opportunities for our children.

Our Year 6 pupils will soon be sitting their SATs assessments. We are incredibly proud of the hard work, determination and resilience they have shown throughout the year. The children have approached their learning with maturity and focus and we know they will do their very best. We wish them all the confidence and success!

The summer term brings with it a wide range of enriching experiences across the school. We have many wonderful trips and visits planned, giving children the chance to extend their learning beyond the classroom, explore new environments and create lasting memories with their peers. These experiences are a valuable part of school life, and we are delighted to be able to offer them.

Thank you, as always, for your continued support.

Warm regards,
Mr J Wheeler

May

Dates for your diary

- 4th May - Bank Holiday Monday - school closed.
- 8th May - No Y4 swimming today
- 11th May - 4HM trip to Guildhall Art Gallery
- 11th - 15th May - Y6 SATs week
- 12th May - EYFS play session for new cohort
- 14th May - EYFS play session for new cohort
- 15th May - Y1 trip to the Science Museum
- 18th May - Y6 trip to Junior Citizens
- 18th - 22nd May - Science Week
- 25th - 29th May - Half term

Children return to school on Monday 1st June



Term time holidays:

Consistent school attendance is vital for your child's academic progress and overall wellbeing. We would like to remind all parents and carers that, in accordance with mandatory government guidance, Headteachers are not permitted to authorise any holidays during term time. A leave of absence can only be granted in "exceptional circumstances" that are deemed rare and unavoidable. The Department for Education is clear that a family holiday for the purpose of leisure or recreation does not constitute an exceptional circumstance. Please be aware that if a child has 5 or more days (10 sessions) of unauthorised absence, the school is now required to consider a penalty notice (fine) under the National Framework. Thank you for your continued support in ensuring your child is in school every day to help them achieve their full potential.

Attendance



At Oakthorpe, we want all children to maximise their learning time by having 96%+ attendance! Currently our whole school attendance has dipped further to 94.4%.

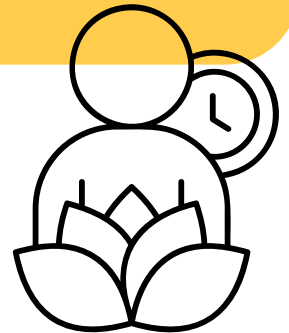


Our core values

Respect
Responsibility
Excellence
Confidence
Creativity

Values of the month

Patience



Punctuality

We continue to see lots of children being brought into school late each morning. This has a massive impact on their learning as they are missing a key part of the morning settling in routine. Please aim to get to school for 8.50am when the gates open!



Lateness adds up!

5 minutes late each day	3 school days lost
10 minutes late each day	6.5 school days lost
15 minutes late each day	10 school days lost
20 minutes late each day	13 school days lost
30 minutes late each day	19 school days lost

uniform

Earrings

Children must not come to school wearing any form of hooped earring. Children are only permitted to wear studs. This is for health and safety reasons.

We will ask children to take any hoop earrings out.

There has been an increase in children coming to school not wearing the correct school uniform. Our policy has been designed to be comfortable for children and to promote a sense of community and belonging. Please ensure children come to school each day in the correct uniform. We run pre-loved uniform shops often but please do come and speak to a member of the team to order any uniform you need.

OAKTHORPE SCHOOL UNIFORM

- Gold polo shirt with logo or white blouse or shirt
- Grey skirt or grey/black trousers. Reception children may wear green tracksuit bottoms
- Green jumper or cardigan
- White, grey or black socks or tights
- Plain black shoes. In winter ankle boots may be worn.
- Plain items of clothing may be purchased from a range of retailers.

OPTIONAL ITEMS

- School tie may be worn with a white shirt or blouse
- Green fleece
- Cotton Dress – white/green gingham
- Grey shorts

Please help us to help you by clearly marking all clothing, bags and personal possessions.



Please be reminded of the following:

- **Cycling shorts are not permitted (including PE lessons)**
- **Leggings can only be worn for PE lessons**

Year 6!

Year 6 have been working incredibly hard this year towards their KS2 SATs! We are incredibly proud of you all and know you will give it your best!

A massive thank you to all of our dedicated staff who have helped support our Year 6s throughout their time at Oakthorpe to get to this moment!



Year 6 had a fantastic session delivered by Success Club called, 'A Moment of Calm'.

In the run up to their exams, the children have been taking moments of calm and practicing mindfulness techniques in and outside the classroom. Thank you to the Success Club team!



SuccessClub

Be better in the next second than you were in the last





Measles

Measles is a serious disease caused by a very infectious virus. It can be dangerous, especially for babies, young children and pregnant women.

Catching measles

Measles spreads easily when an infected person breathes, coughs or sneezes.

The virus can stay in the air and on surfaces for up to 2 hours. You can catch measles just by being in a room where an infected person has been, even up to 2 hours after they have left.

A person with measles can spread the infection in the 4 days before they get the rash until 4 days after the rash appears.

Symptoms of measles



rash



fever



loss of appetite



sore, red eyes



cough

Other early symptoms include sneezing and a runny or blocked nose. A person with measles will feel very unwell. They will have to spend about five days in bed and will be off school or work for around 2 weeks. There is no treatment or cure for measles.

If you think you might have measles, it's important to call your GP surgery. You will need to stay away from other people to avoid spreading the disease.

Treatment of measles

There is no treatment for measles. Doctors usually treat the fever and advise rest whilst your body fights the virus.

Possible long-term complications of measles



hearing loss



blindness



pneumonia



encephalitis



brain damage

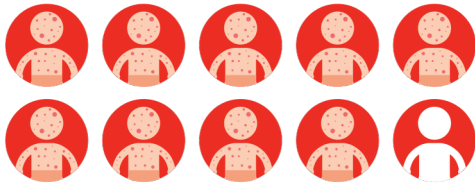


death

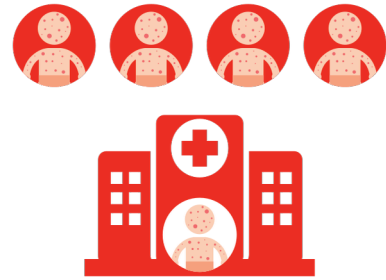
If you get measles when you're pregnant, it could harm your baby. It can cause miscarriage or stillbirth, premature birth, or your baby having a low birthweight.

Measles in numbers

9 out of 10 unvaccinated people will catch measles if they come into contact with an infected person.



1 in 5 people with measles will be admitted to hospital.



1 in 15 children with measles will get one or more complications.



1 in 5,000 people with measles is likely to die.



Preventing measles

The best way to prevent measles is by vaccination following the UK Routine Immunisation Schedule. If any doses from the schedule are missed, contact your GP practice who can advise you and book the necessary vaccine(s).

[NHS Measles Webpage](#)



[UKHSA Measles Guidelines Webpage](#)



[Oxford Vaccine Knowledge Measles Webpage](#)



DISCLAIMER: This document is not to be used as a tool for diagnosing a child or adult with measles. If you or your child have any of the above symptoms, contact your GP or call 111 right away.

Developed by NHS North Central London Integrated Care Board.



Donate a birthday book!

When it is your child's birthday, instead of cakes, why not consider donating a book to our wonderful school library! We will put a lovely sticker in the book to show who the birthday book has been donated by and a certificate will go up in the library! If you are going to bring in cakes for the class, please can these be pre-packaged to support us being allergy friendly!

Please see our [Birthday Book Wishlist](#), which has been carefully created by the children.

 LINK

Raise free donations for Oakthorpe Primary School when shopping online with easyfundraising. It won't cost you a penny extra. All you need to do is:

1. Go to <https://www.easyfundraising.org.uk/causes/oakthorpeprimaryschool/> and join for free.
2. Install the app and Donation Reminder extension.
3. Activate your donation before shopping online and the retailer will automatically donate to us for free!

Thank you for your support.

8,000+ retailers will donate to us whenever you shop with them



TESCO

JOHN
LEWIS

ebay

JUST EAT



Plus, you'll get...



Exclusive retailer offers



Competitions



A warm feeling inside!

Over
£60m
raised for UK good causes

£0
extra cost to anyone



 Advertise with Us!

Would you like to promote your local business or community group to Oakthorpe families?

Our monthly school newsletter reaches a wide and engaged audience of parents, carers, and staff—making it a great opportunity to share your services or events.

To find out more or to book an advert, please contact the school office at:

 office@oakthorpe.enfield.sch.uk

 020 8807 4689

All proceeds go towards supporting enrichment activities for our pupils

Keep Your Child Safe Online



T

E

C

H

TALK

Talk to your child about their internet use and safety

Have meaningful conversations about how they use the internet

Praise your child for safe online behaviours

Welcome your child if they want to ask you a question or tell you about a problem, even if they've done something unwise themselves

EDUCATE

Learn as much as you can about games, platforms, parental controls and the benefits and risks of online activity

Teach your child about specific issues and concerns

Teach your child about safe and unsafe relationships and how to repair friendships following disagreements online

CO-VIEW

Co-view your child's online activity at least 1x/week

Interact with your child online

Model appropriate online behaviour

Co-operate with each other to promote the well-being of all



HOUSE RULES

Set clear routines, rules and boundaries ("house rules")

Keep to age ratings and guidance for apps, games and devices

Restrict online activity to daytime and communal areas

Use filters and parental controls

Spend regular screen-free time with your child



AGE
11+

for a basic phone or highly restricted smart phone without internet access or social media

AGE
14+

for a smart phone with parental controls

*Agree a contract with your child to encourage responsible phone use

